

ZVS Series

Fast Blow-off Valve

AIRBEST



UNIVERSAL

Features

- ◇ It is connected with the suction cup, can effectively seal the vacuum and break the vacuum under the condition of positive pressure input

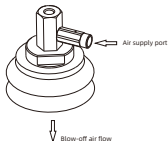
Advantages

- ◇ Low starting pressure with stable and fast blow-off even if there are multiple suction cups working at the same time
- ◇ Fast vacuum break as it is mounted directly on the suction cup



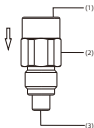
Application

- ◇ Fast blow-off to break vacuum
- ◇ The blow-off air flow can clean the suction cup as it is mounted directly on the suction cup



Structure

- ◇ (1) Air supply port
- ◇ (2) Main body
- ◇ (3) Exhaust port



ZVS Series

Fast Blow-off Valve

AIRBEST

How to order

ZVS - G1F

①

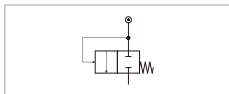
②

① Series	② Air supply port connection thread	Exhaust port connection thread
ZVS	G1F - G1/8 female thread	G1/8 male thread
	G2F - G1/4 female thread	G1/4 male thread

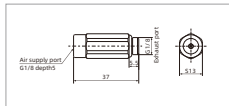
Technical parameters

Model	Air supply pressure range bar	Max. blow flow NL/min	Working temperature °C	Weight g	Recommended hose dia. mm
ZVS-G1F	3.0~7.0	90~160	-10~80	12.9	φ8
ZVS-G2F	3.0~7.0	90~160	-10~80	15.1	φ8

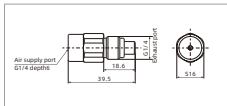
Pneumatic schematic diagram



Dimensions (mm)



ZVS-G1F



ZVS-G2F

Vacuum Accessories

ZPS

ZFA

ZFE

ZFD

ZFB

ZFL

ZFP

ZVAB

ZVAC

ZVBA

ZVEA

ZVR

ZVRH

ZVCM

ZVD

ZVT

ZVS

ZPOT

ZPDE

ZPMR

ZSA