

ZVR Series

Check Valve



UNIVERSAL

AIRBEST

Features

- ◇ In the process of grabbing the workpiece, it will not affect the whole vacuum system once suction cups failed to adsorb the workpiece or the workpiece falls off suddenly after adsorption
- ◇ In the above case, the suction cups are isolated from vacuum system to make sure that the vacuum level and vacuum flow in the whole vacuum system are maintained. It is specific for repeatedly gripping workpieces with various sizes and shapes in a vacuum system



How to order

ZVR 05 - G1M

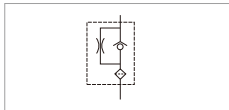
① ② ③

① Series	② Overflow port diameter	③ Suction cup connection thread
ZVR	04 - $\phi 0.4$ mm	M5M - M5 \times 0.8 male thread M5F - M5 \times 0.8 female thread
	05 - $\phi 0.5$ mm	G1M - G1/8 male thread G1F - G1/8 female thread
	06 - $\phi 0.6$ mm	G2M - G1/4 male thread G2F - G1/4 female thread
	10 - $\phi 1.0$ mm	G3M - G3/8 male thread G3F - G3/8 female thread
	12 - $\phi 1.2$ mm	G4M - G1/2 male thread G4F - G1/2 female thread

Selection

Model/ Connection thread	
M - Male thread	F - Female thread
ZVR04-M5M	ZVR04-M5F
ZVR05-G1M	ZVR05-G1F
ZVR06-G2M	ZVR06-G2F
ZVR10-G3M	ZVR10-G3F
ZVR12-G4M	ZVR12-G4F

Air circuit schematic diagram



Vacuum Accessories

ZPS

ZFA

ZFE

ZFD

ZFB

ZFL

ZFP

ZVAB

ZVAC

ZVRA

ZVEA

ZVR

ZVRM

ZVCM

ZVD

ZVT

ZVS

ZPOT

ZPDE

ZPMR

ZSA

ZVR Series

Check Valve

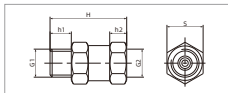
AIRBEST

UNIVERSAL

Technical parameters

Model	Minimum close flow NL/min(-30kPa)	Minimum close flow NL/min(-60kPa)	Max. blow flow NL/min	Weight g
ZVR04-M5 □	1.2	1.3	80	2
ZVR05-G1 □	2.3	2.5	310	8.3
ZVR06-G2 □	2.9	3.4	340	15.6
ZVR10-G3 □	7.3	8	590	28.6
ZVR12-G4 □	8.1	9	790	46

Dimensions (mm)



ZVR

Model/Size	H	G1	h1	G2	h2	S
ZVR04-M5 □	20	M5×0.8	4.5	M5×0.8	5	8
ZVR05-G1 □	28	G1/8	8	G1/8	6	14
ZVR06-G2 □	36	G1/4	10	G1/4	8	17
ZVR10-G3 □	39	G3/8	10	G3/8	8	22
ZVR12-G4 □	41	G1/2	12	G1/2	9	27