

ZVCM Series

Non-Return Valve

AIRBEST



UNIVERSAL

Features

- It can keep vacuum level of the system in case of power failure when vacuum line is closed
- Small size, can be used in narrow space



Selection

ZVCM - M5F

①

②

① Series

② Vacuum generator connection thread

ZVCM

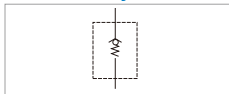
M5F- M5×0.8 female thread

G1F - G1/8 female thread

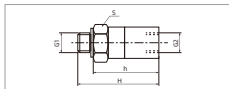
Technical parameters

Model	Valve core works Effective cross-sectional area mm ²	Fluid	Max. pressure range kPa	Removal efficiency μm	Weight g
ZVCM-M5F	2.0	Air	-100~0	40	6
ZVCM-G1F	5.0	Air	-100~0	40	22

Air circuit schematic diagram



Dimensions(mm)



ZVCM

Model/Size	H	h	G1	G2	S
ZVCM-M5F	20	16	M5×0.8	M5×0.8	8
ZVCM-G1F	28.5	23	G1/8	G1/8	13

Vacuum Accessories

ZFS

ZFA

ZFE

ZFD

ZFB

ZFL

ZFP

ZVAB

ZVAC

ZVRA

ZVEA

ZVR

ZVRH

ZVCM

ZVD

ZVT

ZVS

ZPOT

ZPDE

ZPMR

ZSA