

# SP2F Series

AIRBEST

## Thin Lip Flat Suction Cup



PAPER ANTI-DEFORMATION

RoHS

### Features

- ◇ Thin lip, flat and short stroke
- ◇ With support structure at the bottom

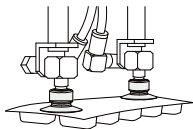
### Advantages

- ◇ Good sealing for handling of thin and flat workpieces
- ◇ Prevents fold during handling of paper and thin film



### Applications

- ◇ Suitable for occasions that has high requirements for mark on product surface during handling, such as paper, plastic film, aluminum foil and copper foil



### Structure

- ◇ Split structure for easy replacement of wearing parts

In the same series, replacement suction cup and fitting can be combined as required



# SP2F Series

## Thin Lip Flat Suction Cup

**AIRBEST**

### How to order

#### SP2F 10 N - M5M

① ② ③ ④

① Series	② Diameter	③ Material & Hardness	④ Connection thread
SP2F	10 - $\phi$ 10mm	N - NBR	Nil - Suction cup only
	15 - $\phi$ 15mm	WS - White silicone	M5M - M5x0.8 male thread
		CN - Conductive NBR	
		CS - Conductive silicone	

### Selection

Model	Connection thread
SP2F10□	SP2F10□-M5M
SP2F15□	SP2F15□-M5M

### Technical parameters

Model	Pull-out force N	Inner volume cm <sup>3</sup>	Weight g	Recommended hose dia. mm	MPQ pcs
SP2F10	3.2	<0.1	0.3	4	10
SP2F15	7.5	<0.1	0.36	4	10

○ Note: Testing vacuum level -60kPa, workpiece with smooth and clean surface. The data of pull-out force as above are figured out without considering safety factor. The data may be different according to different workpiece surfaces. Recommend the length of vacuum hose to be as short as possible, max 2m.

Suction Cup

SZ

SP3

SUF

SAN

SAO

SOFA

STP

SFT

SFA

SBT

SBL

SBLP

SBS

SFP

SXP

SXP

SXP

SXP

SXOF

STC

SFF

SGB

SOF

SOG

SFM

SOM

SFP

SOM

SFU

SFK

SHT

SHT

SOL

SFG

SFGT

SFD

SB

SBA

SF

SU

SP2F

SPA

SPD

SFF

SPC

SPJ

SPU

SH

SHB

SBB

SOP

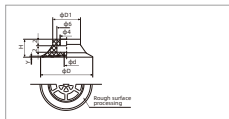
SNP

# SP2F Series

## Thin Lip Flat Suction Cup

**AIRBEST**

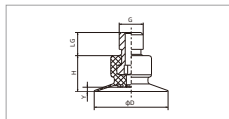
### Dimensions(mm) - Suction cup only



SP2F10-15

Model/Size	D	D1	H	d	Y
SP2F10□	11	8.5	5.5	1.5	0.3
SP2F15□	16	8.5	5.5	1.5	0.3

### Dimensions(mm) - Suction cup with fitting



SP2F10-15 Male thread connection

Model/Size	D	H	G	LG	Y
SP2F10□-M5M	11	5.5	M5×0.8	5	0.3
SP2F15□-M5M	16	5.5	M5×0.8	5	0.3

### Mounting parts

Item	Model M - Male thread	Applicable suction cup
Fitting for suction cup	PJS-M5M-ST2	SP2F10, SP2F15

# SP2F Series

## Suction Cup with Locking Fitting

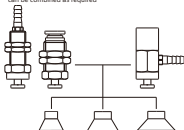
AIRBEST

Suction Cup

### Structure

- Consisting of replacement suction cup and locking fitting
- Plug-in fitting for suction cup
- Vertical vacuum port, Pagoda fitting or one-touch fitting for connection, male thread for mounting
- Lateral vacuum port, Pagoda fitting for connection, female thread for mounting

In the same series, replacement suction cup and locking fitting can be combined as required



### How to order

SP2F L B6 - M5M

① ② ③ ④

① Model	② Vacuum port direction	③ Vacuum port connection	④ Mounting thread
SP2F10N	Nil - Vertical direction L - Lateral direction	A4 - One-touch fitting $\phi 4$ hose A6 - One-touch fitting $\phi 6$ hose B6 - Pagoda fitting $\phi 6$ hose	M4F - M4x0.7 female thread M8M - M8x1 male thread M12M - M12x1 male thread

◇ Please refer to page 287 for suction cup selection

### Selection

Model	Vacuum port direction Vertical - Pagoda fitting	Vertical - One-touch fitting	Lateral - Pagoda fitting
SP2F10□	SP2F10□-B6-M8M	SP2F10□-A4-M12M	SP2F10□-LB6-M4F
SP2F15□	SP2F15□-B6-M8M	SP2F15□-A4-M12M	SP2F15□-LB6-M4F

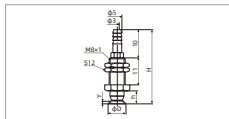
SZ  
SP3  
SUF  
SAN  
SAO  
SOFA  
STP  
SFT  
SFA  
SBT  
SEL  
SBLP  
SBS  
SPF  
SBP  
SXP  
SGP  
SBCF  
STC  
SFF  
SOB  
SOF  
SGM  
SPM  
SOM  
SBP  
SDM  
SPU  
SFK  
SHT  
SDL  
SPG  
SFGT  
SPD  
SB  
SBA  
SF  
SU  
SP2F  
SPA  
SPD  
SPF  
SPC  
SPJ  
SPU  
SH  
SHB  
SBB  
SOP  
SNP

# SP2F Series

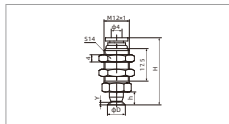
## Suction Cup with Locking Fitting

**AIRBEST**

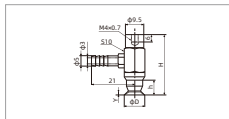
### Dimensions(mm)



SP2F10-15 Vertical-Pagoda fitting



SP2F10-15 Vertical - One-touch fitting



SP2F10-15 Lateral-Pagoda fitting

Model/Size	D	H	h	Y
SP2F10□-B6-M8M	11	29.5	5.5	0.3
SP2F15□-B6-M8M	16	29.5	5.5	0.3

Model/Size	D	H	h	Y
SP2F10□-A4-M12M	11	33	5.5	0.3
SP2F15□-A4-M12M	16	33	5.5	0.3

Model/Size	D	H	h	Y
SP2F10□-LB6-M4F	11	28	5.5	0.3
SP2F15□-LB6-M4F	16	28	5.5	0.3

# SP2F Series

## Suction Cup with Level Compensator

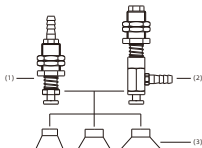
**AIRBEST**

Suction Cup

### Structure

- Consisting of replacement suction cup(3) and level compensator
- Plug-in fitting for suction cup
- Vertical vacuum port(1), male thread for mounting
- Lateral vacuum port(2), male thread for mounting

In the same series, replacement suction cup and level compensator can be combined as required



### How to order

**SP2F10N - F E 10 LB6 - M11**

① ② ③ ④ ⑤ ⑥

① Model ② Level compensator type ③ Buffer type ④ Buffer stroke ⑤ Vacuum port connection ⑥ Mounting thread

**SP2F10N** F - PSPF Series

E - External spring 4

10

B6 - Vertical, pagoda fitting  $\phi 6$  hose M11 - M11 $\times$ 1

LB6 - Lateral, pagoda fitting  $\phi 6$  hose

### Selection

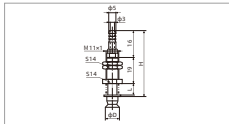
Model	Vacuum port direction Vertical - Pagoda fitting		Lateral - Pagoda fitting	
<b>SP2F10</b> □	SP2F10□-FE4B6-M11	SP2F10□-FE10B6-M11	SP2F10□-FE4LB6-M11	SP2F10□-FE10LB6-M11
<b>SP2F15</b> □	SP2F15□-FE4B6-M11	SP2F15□-FE10B6-M11	SP2F15□-FE4LB6-M11	SP2F15□-FE10LB6-M11

# SP2F Series

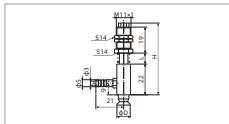
## Suction Cup with Level Compensator

**AIRBEST**

### Dimensions(mm)



SP2F10-15 Vertical-Pagoda fitting



SP2F10-15 Lateral-Pagoda fitting

Model/Size	D	H	L	Buffer stroke
SP2F10□-FE4B6-M11	11	46	8	4
SP2F10□-FE10B6-M11	11	58	20	10
SP2F15□-FE4B6-M11	16	46	8	4
SP2F15□-FE10B6-M11	16	58	20	10

Model/Size	D	H	L	Buffer stroke
SP2F10□-FE4LB6-M11	11	52	8	4
SP2F10□-FE10LB6-M11	11	64	20	10
SP2F15□-FE4LB6-M11	16	52	8	4
SP2F15□-FE10LB6-M11	16	64	20	10