

# SOP Series

## Circular Foam Rubber Suction Cup

AIRBEST



STONE



ROUGH SURFACE

RoHS

### Features

- ◇ Annular foam rubber
- ◇ Metal support plate
- ◇ NF(black) for Neoprene foam rubber, OF(orange) for Geranium foam rubber
- ◇ Available in various sizes

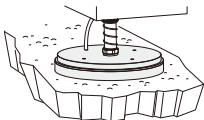
### Advantages

- ◇ Long lifetime, good sealing and large suction force
- ◇ Large area support plate, light weight and high load
- ◇ NF and OF material optional for different working conditions
- ◇ Suitable for workpieces of various sizes and shapes



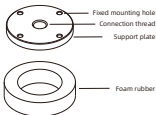
### Applications

- ◇ Handling of workpieces with very rough or uneven surface such as buckle plate, embossed plate, marble, tile, cement board and grid metal plate
- ◇ NF for workpieces with rough surface and outdoor use. Good weather and ozone resistance, but poor in yield elasticity and not suitable for food industry.
- ◇ OF for workpieces with very rough surface. Good yield elasticity, wear resistance, tear resistance, high cut resistance and good ductility, but poor in oil resistance, heat resistance and aging resistance, not suitable for food industry.
- ◇ Pay attention to the use of water and oil environment
- ◇ It is recommended to use large flow vacuum generator
- ◇ For the use of the sponge suction cup, please refer to General Precautions on Page 24



### Structure

- ◇ Consisting of metal support plate and foam rubber. Foam rubber is with gum, which can stick to the support plate directly. Foam rubber is consumable, which can be ordered separately for replacement



# SOP Series

## Circular Foam Rubber Suction Cup

**AIRBEST**

Suction Cup

### How to order

## SOP 64 NF - G2F

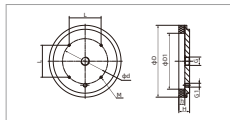
① ② ③ ④

① Series	② Diameter	③ Material	④ Connection thread
SOP	40 - $\phi 40$ mm	127 - $\phi 127$ mm	NF - Neoprene foam rubber
	64 - $\phi 64$ mm	180 - $\phi 180$ mm	OF - Geranium foam rubber
	92 - $\phi 92$ mm	220 - $\phi 220$ mm	
			Nil - Foam rubber only
			G2F - G1/4 female thread
			G3F - G3/8 female thread
			G4F - G1/2 female thread

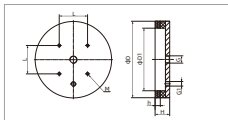
### Selection

Model	Connection thread	G2F	G3F	G4F	MPQ pcs
SOP40□	SOP40□-G2F	-	-	-	1
SOP64□	SOP64□-G2F	-	-	-	1
SOP92□	-	SOP92□-G3F	-	-	1
SOP127□	-	-	SOP127□-G4F	-	1
SOP180□	-	-	SOP180□-G4F	-	1
SOP220□	-	-	SOP220□-G4F	-	1

### Dimensions(mm)



SOP40-180



SOP220

Model/Size	D	D1	H	h	G	G1	d	L	M	Weight g	Pull-out force N
SOP40□-G2F	40	20	25	15	G1/4	-	-	-	-	34.9	7.8
SOP64□-G2F	64	40	25	15	G1/4	-	40	-	-	82.1	35
SOP92□-G3F	92	64	26	15	G3/8	-	70	-	4-M5×0.8depth6	191.1	85
SOP127□-G4F	127	92	30	15	G1/2	G1/8	-	70	4-M5×0.8depth6	482.1	175
SOP180□-G4F	180	127	27	15	G1/2	G1/8	-	80	4-M5×0.8depth6	754.1	385
SOP220□-G4F	220	180	42	15	G1/2	G1/4	-	85	4-M8×1.25depth6	1570.9	635

○ Note: 1. Testing vacuum level -93kPa, workplace with smooth and clean surface. The data of pull-out force as above are figured out without considering safety factor.  
The data may be different according to different workplace surfaces. Recommend the length of vacuum hose to be as short as possible, max 2m.  
2. The dimensional tolerance conforms to GB 3672.1-2002-1 M3 rubber product dimensional tolerance standard