

# SFA Series

## Ultra-thin Lip Flat Suction Cup Special for Plastic Bags



PLASTIC BAG



HIGH SEALING

AIRBEST

RoHS

Suction Cup

### Features

- ◇ Ultra-thin sealing lip
- ◇ Support structure at the bottom

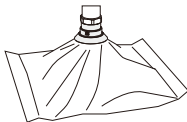
### Advantages

- ◇ Suitable for film products, can fit workpiece closely
- ◇ Prevent the workpiece from being sucked into suction cup and wrinkling
- ◇ Food grade silicone, suitable for food package



### Applications

- ◇ Handling plastic film packaging bag
- ◇ Open film packaging bag in packaging production line



### Structure

- ◇ Suction cup and fitting are split structure design, wearing parts can be replaced separately

In same series, replacement suction cup and fitting can be combined on request.



SZ  
SP3  
SUF  
SAN  
SAO  
SOFA  
STP  
SFT  
SFA  
SST  
SEL  
SELPL  
SES  
SFP  
SEP  
SXP  
SGP  
SDCP  
STC  
SFF  
SOB  
SOF  
SDG  
SFM  
SOM  
SEP  
SOM  
SPU  
SFK  
SHT  
SDL  
SPG  
SFGT  
SPD  
SB  
SBA  
SF  
SU  
SP2P  
SPA  
SPD  
SFF  
SPC  
SPJ  
SPU  
SH  
SHB  
SBB  
SGP  
SNP

### How to order

### SFA 20 S - M5M

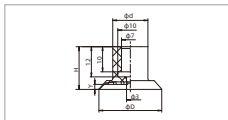
① ② ③ ④

① Series	② Diameter	③ Material & Hardness	④ Connection thread
SFA	20 - $\phi 20\text{mm}$ 25 - $\phi 25\text{mm}$ 35 - $\phi 35\text{mm}$ 50 - $\phi 50\text{mm}$	S - Silicone <b>40</b>	Nil - Suction cup only M5M - M5x0.8 male thread G1M - G1/8 male thread G2M - G1/4 male thread G3M - G3/8 male thread
			M5F - M5x0.8 female thread M8F - M8x1.25 female thread

### Selection

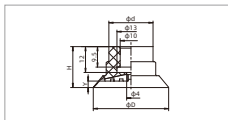
Model	Connection thread M - Male thread	F - Female thread	MPQ pcs
SFA20S	SFA20S-M5M SFA20S-G1M	SFA20S-M5F	5
SFA25S	SFA25S-M5M SFA25S-G1M	SFA25S-M5F	5
SFA35S	SFA35S-G2M SFA35S-G3M	SFA35S-M8F	5
SFA50S	SFA50S-G2M SFA50S-G3M	SFA50S-M8F	1

### Dimensions(mm) - Suction cup only



SFA20-25

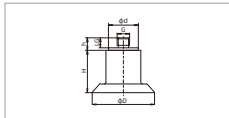
Model/Size	D	H	d	Y
SFA20S	20	17	13	1.6
SFA25S	25	17	14	2



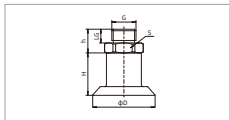
SFA35-50

Model/Size	D	H	d	Y
SFA35S	35	19	20.5	3
SFA50S	50	22	20.5	4.5

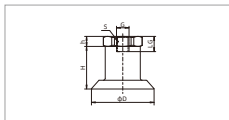
## Dimensions(mm) - Suction cup with fitting



SFA - Male thread connection



SFA - Male thread connection



SFA - Female thread connection

○ Note: The dimensional tolerance conforms to GB16723-2002-1 M3 rubber product dimensional tolerance standard

Model/Size	D	H	h	G	LG	d
SFA20S-M5M	20	17	5	M5×0.8	4	12
SFA25S-M5M	25	17	5	M5×0.8	4	12

Model/Size	D	H	h	G	LG	S
SFA20S-G1M	20	17	9.5	G1/8	5.5	14
SFA25S-G1M	25	17	9.5	G1/8	5.5	14
SFA35S-G2M	35	19	11.5	G1/4	6.5	21
SFA35S-G3M	35	19	11.5	G3/8	6.5	21
SFA50S-G2M	50	22	11.5	G1/4	6.5	21
SFA50S-G3M	50	22	11.5	G3/8	6.5	21

Model/Size	D	H	h	G	LG	S
SFA20S-M5F	20	17	4	M5×0.8	5	14
SFA25S-M5F	25	17	4	M5×0.8	5	14
SFA35S-M8F	35	19	6	M8×1.25	8	21
SFA50S-M8F	50	22	6	M8×1.25	8	21

## Mounting parts

Item	Model M - Male thread	F - Female thread	Applicable suction cup
Fitting for suction cup	PJS-M5M-SFA20	PJS-M5F-SFA20	SFA20,25
	PJS-G1M-SFA20	-	SFA20,25
	PJS-G2M-SFA50	PJS-M8F-SFA50	SFA35,50
	PJS-G3M-SFA50	-	SFA35,50